

# Cast Iron Ball Valve - Wafer Type - Direct Mount

LV 5558

ISO 5211 for Direct Mount, Wafer to suit PN16 Flanges, Cast Iron Body, 304 Stainless Steel Ball & Stem, RPTFE Seats, NBR O-rings, Steel Lever Operated



### Pressure / Temperature Specifications

Pressure	PN16
Temperature	-10°C to 100°C

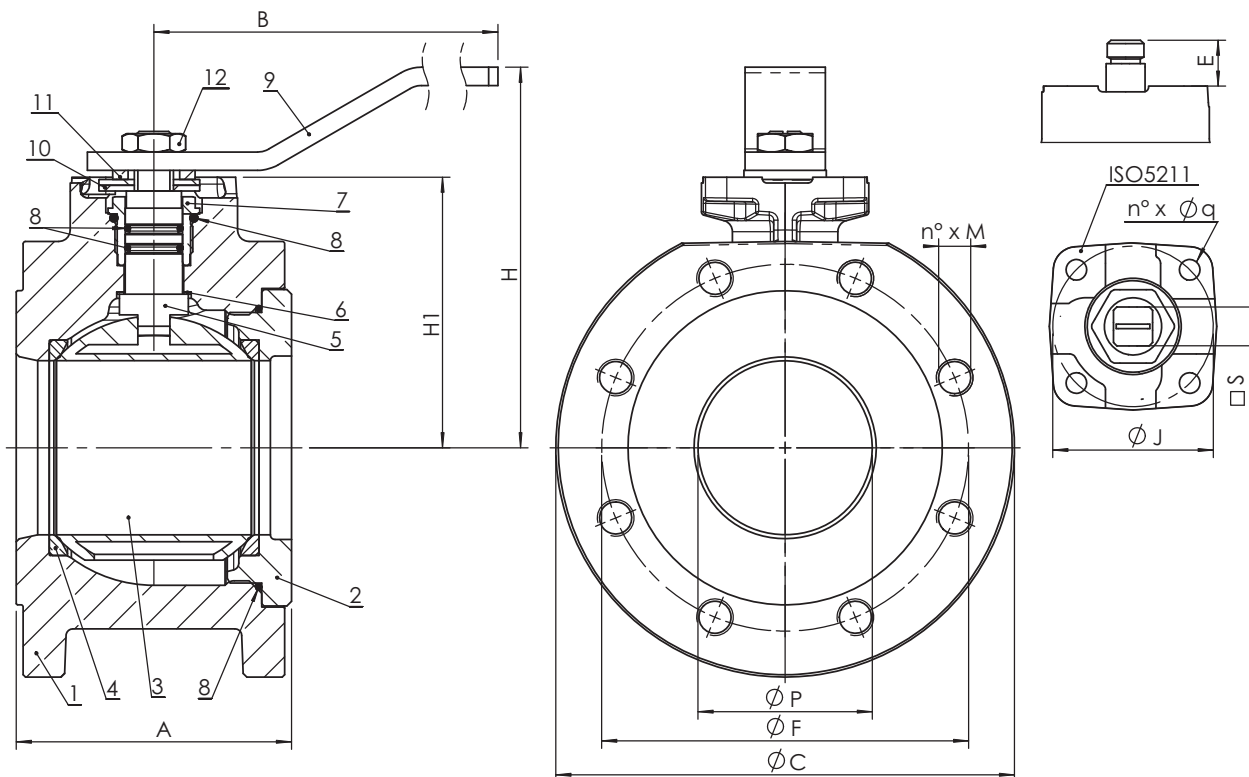
### Dimensions

DN	1"	1¼"	1½"	2"	2½"	3"	4"
<b>P</b>	25	32	40	50	63	76	95
<b>A</b>	50	55	65	80	100	120	130
<b>H</b>	96	101	125	133	142	166	181
<b>H1</b>	59	64	78.5	87	95	118	132.5
<b>B</b>	170	170	230	230	230	280	360
<b>C</b>	115	140	150	165	185	200	220
<b>n°xM</b>	4xM12	4xM16	4xM16	4xM16	4xM16	8xM16	8xM16
<b>F</b>	85	100	110	125	145	160	180
<b>ISO</b>	F04	F04	F05	F05	F05	F07	F07
<b>J</b>	42	42	50	50	50	70	70
<b>n°xq</b>	4xM5	4xM5	4x7	4x7	4x7	4x9	4x9
<b>E</b>	14.5	14.5	17.5	17.5	17.5	20	20
<b>S</b>	11	11	14	14	14	17	17
<b>Nm*</b>	18	18	18	20	40	70	100
<b>Kv</b>	83.5	150.4	255.0	435.0	672.0	947.0	1508.0
<b>Kg</b>	2.54	3.6	5.4	7.1	10.5	12.7	18.5

### Material Specifications

1. Body	EN GJL 250 Cast Iron
2. Flange	EN GJL 250 Cast Iron
3. Ball	AISI 304 Stainless Steel
4. Ball Seat	Reinforced PTFE
5. Stem	AISI 304 Stainless Steel
6. Sliding Washer	PTFE
7. Ring	AISI 304 Stainless Steel
8. O-ring	NBR
9. Lever	Epoxy Coated Carbon Steel
10. Stop Plate	Galvanized Carbon Steel
11. Spring Washer	Galvanized Carbon Steel
12. Nut	Galvanized Carbon Steel

\*In order to choose the correct actuator, we recommend multiplying the Nm figure by a safety factor of 1.5



# Cast Iron Ball Valve - Wafer Type - Direct Mount

LV 5558

