

Lugged & Tapped Butterfly Valve - NBR Liner - ANSI 150

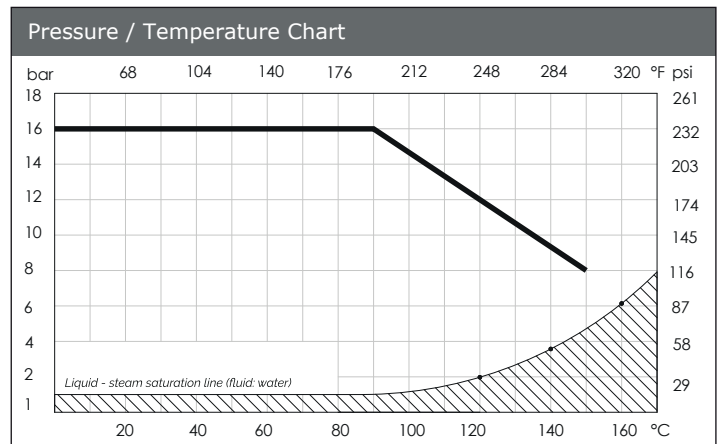
LV 9924

ISO 5211 for Direct Mount, Epoxy Coated Ductile Iron Body, 316 Stainless Steel Disc, NBR Liner, Locking Lever Operation, Complies with 97/23/CE (PED) Directive CE 1115. Lugged and Tapped to suit ANSI 150.



Pressure / Temperature Specifications	
Pressure	PN16
Temperature	-10°C to 80°C (90°C Peak)

Material Specifications	
1. Body	EN GJS 400 - 15 Ductile Iron
2. Disc	CF8M Stainless Steel
3. Stem	AISI 420 Stainless Steel
4. Liner	NBR
5. Bushing	PTFE
6. Washer	Galvanised Carbon Steel
7. Circlip	Spring Steel
8. O-ring	Viton
9. Lever (1" to 10")	1" to 6" Aluminium 8" & 10" EN GJS 400 - 15 Ductile Iron
10. Bolts	AISI 201 Stainless Steel



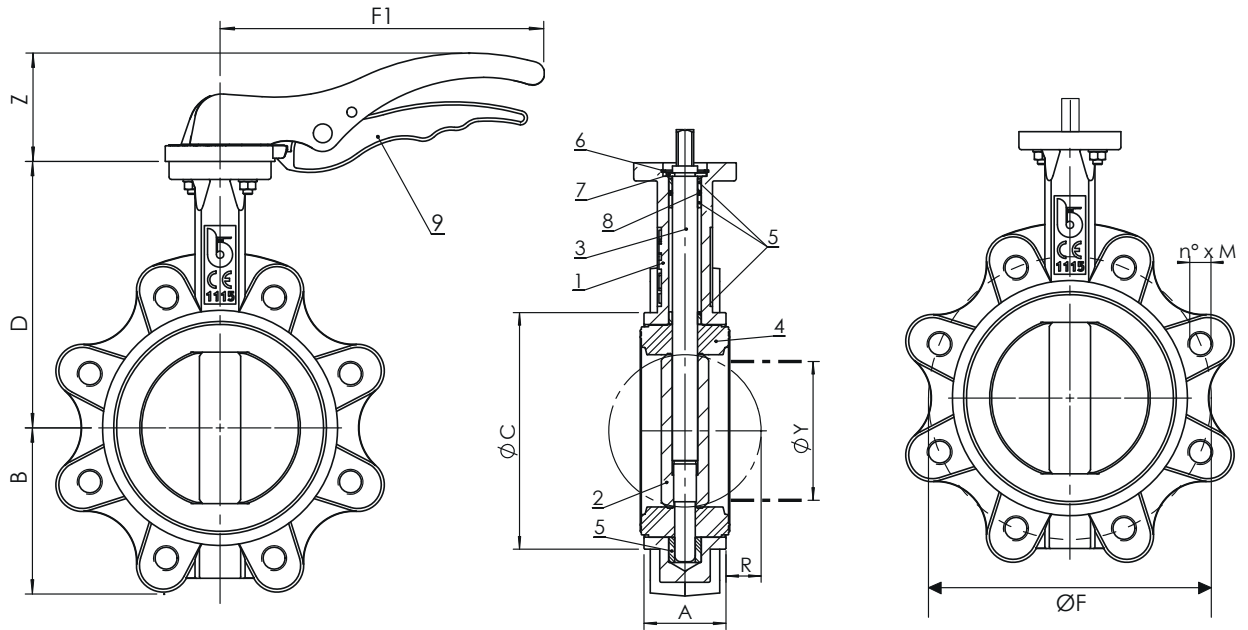
Weight		
Size	with Lever	with Gearbox
2"	3.2	7.2
2½"	4.1	8.1
3"	5.4	9.2
4"	6.7	10.5
5"	9.6	12.9
6"	10.8	14.1
8"	21.1	28.4

Operating Torque (Nm)				
Size	3 Bar	6 Bar	10 Bar	16 Bar
2"	11.3	12.0	13.0	13.0
2½"	17.0	18.0	20.0	21.0
3"	23.0	25.0	26.0	28.0
4"	33.0	36.0	40.0	44.0
5"	48.0	54.0	61.0	68.0
6"	68.0	78.0	88.0	99.0
8"	120.0	134.0	148.0	162.0

KV Values									
Size	10°	20°	30°	40°	50°	60°	70°	80°	90°
2"	0.05	2.6	6.0	13.0	23.0	38.0	60.0	91.0	99.0
2½"	0.00	3.8	14.0	33.0	53.0	75.0	98.0	108.0	108.0
3"	0.17	7.8	16.0	34.0	60.0	100.0	158.0	237.0	261.0
4"	0.26	15.0	31.0	67.0	120.0	199.0	314.0	471.0	518.0
5"	0.43	25.0	53.0	115.0	205.0	339.0	535.0	803.0	883.0
6"	0.69	39.0	82.0	177.0	316.0	522.0	827.0	1241.0	1364.0
8"	2.6	52.0	142.0	250.0	450.0	713.0	1122.0	1723.0	2716.0

Lugged & Tapped Butterfly Valve - NBR Liner

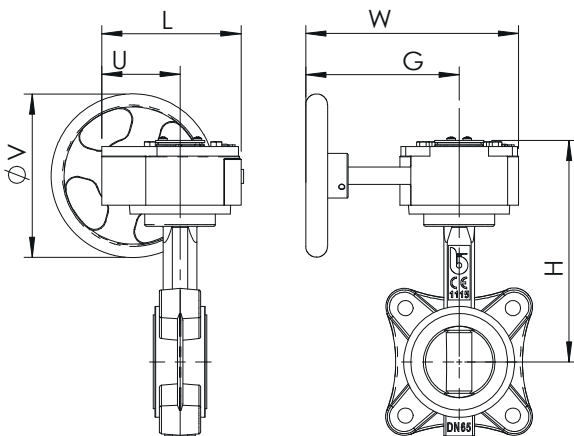
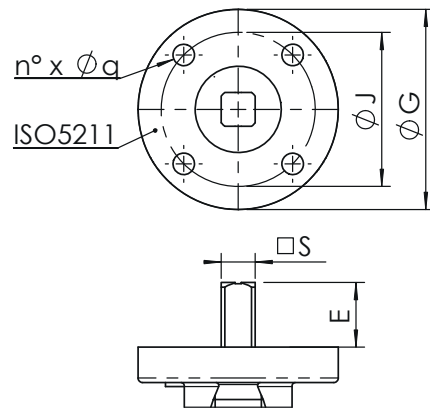
LV 9924



Dimensions								
Size	A	B	ØC	D	F1	R	ØY	Z
2"	43	62	89	126	170	5	31	50
2½"	46	69	102	136	170	9	45	50
3"	46	90	118	150	206	17	65	69
4"	52	106	150	170	206	26	90	69
5"	56	119	174	180	285	34	110	90
6"	56	131	205	200	285	50	146	90
8"	60	166	260	230	400	71	194	72

Drilling Dimensions		
Size	ØF	No x M
2"	120.7	4 x 16
2½"	139.7	4 x 16
3"	152.4	4 x 16
4"	190.5	8 x 16
5"	215.9	8 x 20
6"	241.5	8 x 20
8"	298.5	8 x 20

Mounting Plate Dimensions						
Size	ISO	G	J	No x Øq	S	E
2"	F05	65	50	4 x 7	9	21
2½"	F05	65	50	4 x 7	9	21
3"	F05	65	50	4 x 7	11	21
4"	F05	65	50	4 x 7	11	21
5"	F07	90	70	4 x 9	14	27
6"	F07	90	70	4 x 9	14	27
8"	F10	125	102	4 x 11	17	27

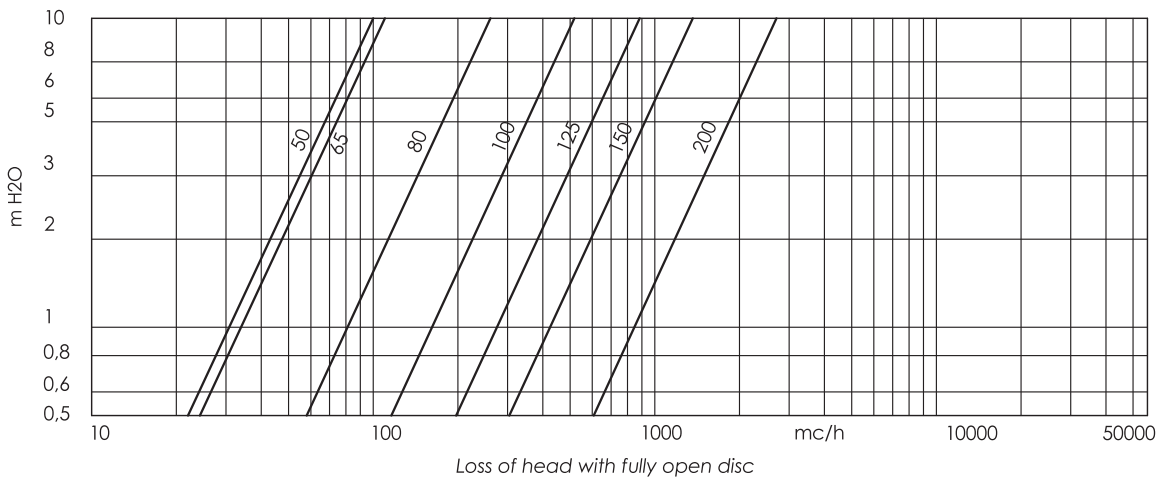


Dimensions with Gearbox						
Size	L	U	H	W	G	V
2"	130	77	188	225	170	150
2½"	130	77	198	225	170	150
3"	130	77	212	225	170	150
4"	130	77	232	225	170	150
5"	130	77	242	225	170	150
6"	130	77	262	225	170	150
8"	180	104	308	338	260	300

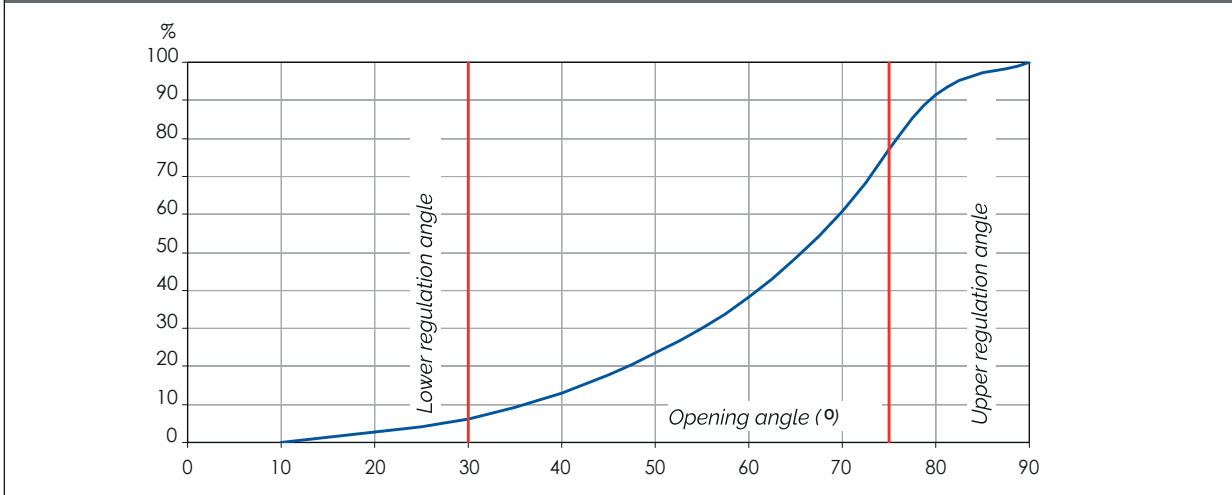
Lugged & Tapped Butterfly Valve - NBR Liner - ANSI 150

LV 9924

Head Loss Chart (Fluid: Water [1m H₂O = 0.098 Bar] Head Loss with Valve Fully Opened)



Flow Rate / Opening Position Chart (Flow percentage on the flow at full opening under the same head loss)



Last updated 01/03/2021